



We keep your business moving



-
- Established in 1947
 - Independent, international freight forwarding and logistics company
 - Neutral customs brokerage
 - Private ownership
 - 60 professionally trained and well qualified employees and apprentices
 - 5 offices in Switzerland and worldwide network with affiliated companies (Leman) and partners

Services



- Sea and airfreight
- Road and rail transportation
- Event logistics
- Customs brokerage
- Projects
- Consultation
- Warehouse logistics



Land, Air or Sea –
you decide

Your business will be taken care of by people who...

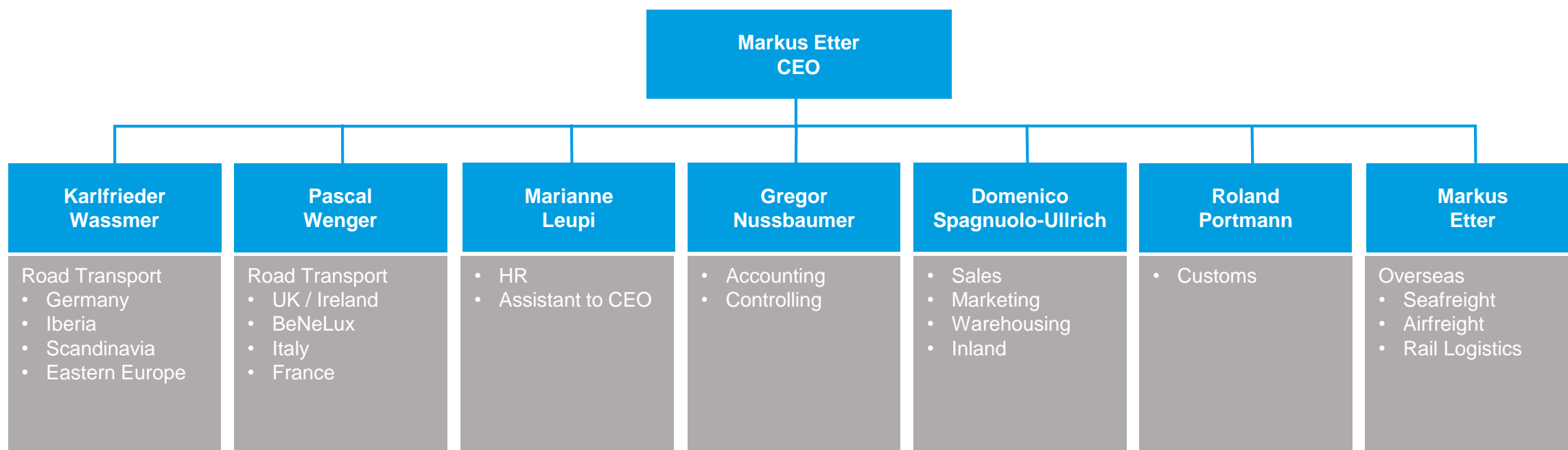


- ... **appreciate** your uniqueness
- ... **respond** to your requirements
- ... **understand** your and your customers' needs
- ... **act** responsibly with a solid approach
- ... **acknowledge** dependability and attention to detail as the basic values
- ... **deliver** outstanding performance for lasting partnerships
- ... **like** to invest their time in you
- ... **enjoy** being there for you



**We work hard for your
success**

Organization Chart (Management)

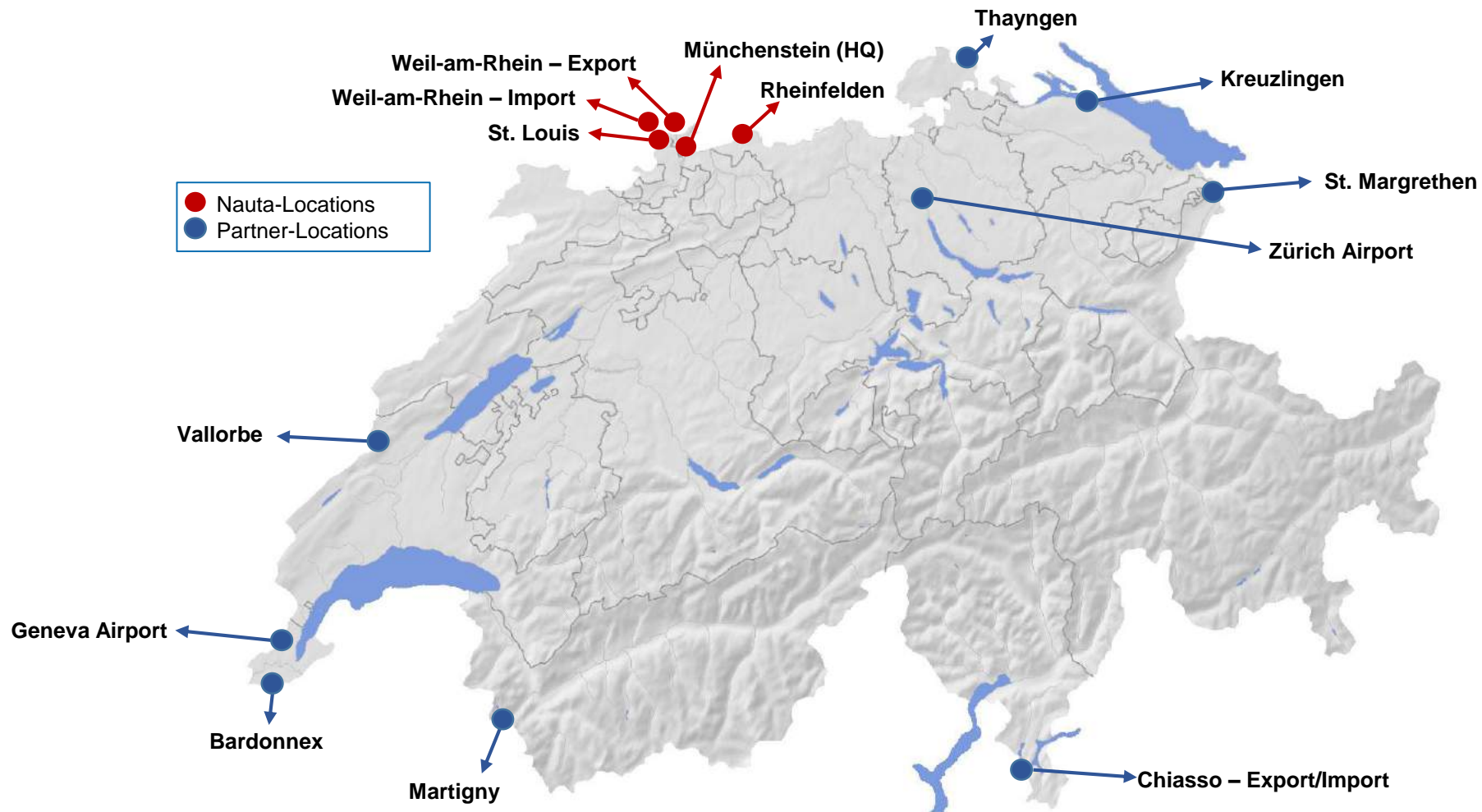


Our contacts



Relation	Person in charge	Tel. / Mobile	Fax	E-Mail
Managing Director	Mr. Markus Etter	+41 61 337 31 30 +41 78 802 61 01	+41 61 337 31 07	markus.etter@nauta.ch
Sales / Marketing / Warehousing / Inland	Mr. Domenico Spagnuolo-Ullrich	+41 61 337 31 22 +41 79 550 24 22	+41 61 337 31 80	domenico.spagnuolo@nauta.ch
Business Development Manager	Mr. Roland Gerhardt	+41 78 656 78 14	+41 61 337 31 80	roland.gerhardt@nauta.ch
Finances / Accounting	Mr. Gregor Nussbaumer	+41 61 337 31 18	+41 61 337 31 07	gregor.nussbaumer@nauta.ch
Germany / Eastern Europe Scandinavia / Iberia	Mr. Karlfrieder Wassmer	+41 61 337 31 23	+41 61 337 31 04	karlfrieder.wassmer@nauta.ch
Italy	Mr. Raffaello Licciardello	+41 61 337 31 52	+41 61 337 31 02	raffaello.licciardello@nauta.ch
France / BeNeLux	Mr. Thierry Naas	+41 61 337 31 44	+41 61 337 31 02	thierry.naas@nauta.ch
Great Britain / Ireland	Mr. Pascal Wenger	+41 61 337 31 94	+41 61 337 31 02	pascal.wenger@nauta.ch
Seafreight / Airfreight	Mrs. Michèle Bernhard Mrs. Liwia Schüpfer	+41 61 337 31 86 +41 61 337 31 81	+41 61 337 31 80	michele.bernhard@nauta.ch liwia.schuepfer@nauta.ch
Customs services	Mr. Roland Portmann	+41 61 337 31 61	+41 61 337 31 05	roland.portmann@nauta.ch

Locations in Switzerland



Safety and Quality



- ISO 9001 : 2008 certification
- Experts professionally trained in ADR regulations
- BVH 14635 Bio-certification based on Swiss Bio norms (handling and storage)



Seafreight



- FCL + LCL services / breakbulk shipments worldwide
 - Asia = weekly departures, Import/Export
 - USA = weekly departures Import/Export
- Crosstrade shipments
- Pre- and oncarriage to/from deep sea ports
- Dangerous and/or temperature controlled goods, heavy lifts
- Multimodal transports
- Container stuffing/destuffing, dangerous goods handling
- Intermediate storage and distribution
- Customs brokerage



Individuality is our strength

Airfreight



- Door-to-Door Services worldwide
- Consolidations
- Dangerous goods shipments
- Crosstrades worldwide
- Customs brokerage



**We move your goods across
the skies**

Road Transportation



- General cargo shipments, partloads and full-loads
 - DE / IT / BeNeLux = daily departures Imp./Exp.
 - UK / FR / Scandinavia = departures twice a week Imp./Exp.
- Regular linehaul services across Europe
- Cargo distribution within Switzerland
- Courier, express und parcel services
- Dangerous goods, specialized movements and heavy lifts
- Temperature controlled shipments
- Extra tours / high urgency transports
- Customs brokerage



We do not forsake you

Rail Transports



- Import / export shipments
- Multimodal transports
- Conventional railway carriages
- Container transports
- Customs brokerage



**We bring your goods safely
to their destination**

Warehousing solutions



- Crossdocking
- Order management, picking, packing, labeling, neutralizing
- Block and rack storage, from small parts to oversized goods
- Open Customs Warehouse, bonded storage
- Short and long term storage
- Customs brokerage



Your merchandise is
in caring hands

Customs Clearance Services



- Import, export and EU customs clearances
- Clearances at the border, Customs authorized sender / receiver
- Open customs warehouse
- E-dec (CH), NCTS, ATLAS-Zabis (DE), Conex (FR)
- Transit declarations (T1/T2 – Carnet TIR)
- Documentation
- Consultancy and support



Our experts take care



Facts of associate Leman

- 1900 The company Paul Lehmann was founded in Copenhagen
- 1971 LEMAN USA was founded
- 1973 Change of name to LEMAN
- 1987 LEMAN Sweden was founded
- 2001 LEMAN Norway was founded
- 2006 LEMAN Finland was founded
- 2010 LEMAN UK was founded
- 2012 Acquisition of Otto Hansen & Co., DK
- 2014 Acquisition of Dan Cargo, DK
- 2015 Acquisition of Dalpa International in UK
- 2016 Opening of new branch in Charlotte, North Carolina
- 2017 Acquisition of Maru International by Leman UK Ltd.



Leman branches worldwide



Memberships & Partnerships



- Collyer (Global Logistics Agent) The Collyer logo features a red, multi-pointed starburst or flower-like shape above the word "COLLYER" in a blue, sans-serif font.
- Handelskammer beider Basel (Basel Chamber of Commerce) The logo for Handelskammer beider Basel includes the text "beider basel" in a small, blue font above the word "handelskammer" in a bold, black, sans-serif font. A small red graphic element is positioned to the left of the text.
- Spedlogswiss (Swiss Freight Forwarders' Association) The SPEDLOGSWISS logo consists of the word "SPEDLOGSWISS" in a bold, black, sans-serif font, with "SPED" in red and "LOGSWISS" in black.
- Spedlogswiss Nordwestschweiz (Freight Forwarders' Association of North Western Switzerland) The logo for Spedlogswiss Nordwestschweiz features the word "SPEDLOGSWISS" in a bold, black, sans-serif font, with "SPED" in red and "LOGSWISS" in black. Below it, the words "NORDWESTSCHWEIZ" are written in a smaller, blue, sans-serif font.
- SSC (Swiss Shippers' Organization) The logo for the Swiss Shippers' Council (SSC) includes the text "SWISS SHIPPERS' COUNCIL" in a blue, sans-serif font above a blue graphic element that resembles a stylized ship or a bridge.
- Transcoop09 (Cooperation of German forwarders) The Transcoop09 logo features the word "Transcoop" in a blue, sans-serif font, with "09" in a white font inside a blue square. Below the text is the tagline "Networking in Loads and Logistics." in a small, blue font.
- Schweizerische Getreidebörse Luzern (Swiss Corn Exchange Lucerne) The logo for the Schweizerische Getreidebörse Luzern includes a blue graphic element on the left, followed by the text "SCHWEIZER GETREIDEBORSE" in a blue, sans-serif font, with "LUZERN" in a smaller, blue font below it.
- Leman (International Freight Forwarder and Logistics Provider) The LEMAN logo consists of the word "LEMAN" in a bold, blue, sans-serif font, followed by three small red squares containing white symbols.

References



FONTAROCCA
NATURSTEINE

CLARINS



Hero

emerell 



ISOVER
SAINT-GOBAIN



fairtrade

 **AGRANO**



COSSWISS 



MP Multipack AG
pack4custom



Protoil Marketing SA Food Ingredients


FUGA GETREIDE

SUPREMIA
BRANDS MADE REAL



swiss line
BY DERMALAB



Thank you for your attention!

Nauta SA

Florenz-Strasse 18

CH – 4142 Münchenstein

Tel.: +41 61 337 31 11

Fax: +41 61 337 31 01

info@nauta.ch

www.nauta.ch